



# SIGMA CHI FRATERNITY at MISSOURI STATE

Fraternity Life & Campus Greek Community



Sigma Chi International Fraternity is one of the largest social fraternities in North America. The fraternity has 231 active chapters across the United States and Canada and has initiated more than 366,468 members. Of the 257,925 living alumni, 2,600 are active alumni volunteers. Across campus's today, you can find 14,897 collegiate brothers.

The Fraternity was founded on June 28, 1855, at Miami University in Oxford, Ohio, by members who split from the Delta Kappa Epsilon fraternity.

Sigma Chi is based upon the ideals of Friendship, Justice and Learning. Sigma Chi Fraternity encourages its members to cultivate, maintain and achieve true friendship, equal justice for all and to realize the fulfillment of learning as a part of a member's overall responsibilities.

Sigma Chi Fraternity offers programs that foster leadership, build character, and promote positive relationship skills among its members.

Through world-class leadership training, extensive mentoring programs and a strong focus on academic achievement, Sigma Chi sets itself apart as the preeminent collegiate leadership development organization, challenging members to live by its core values and exemplify Character-in-Action™ in every aspect of their lives and the lives of others.

## *the best in the* **Greek-Letter World**

The Sigma Chi Foundation provides more support to our members than any other Greek letter organization (Fraternity or Sorority) – over 6.7 times more grant support, on average when compared to other Greek-letter foundations over the past five years. The Sigma Chi Foundation remains at the forefront providing value to our members across North America.



For more information on Sigma Chi, please visit the Fraternity's website at [www.sigmachi.org](http://www.sigmachi.org).



THE BADGE OF SIGMA CHI



THE PURPOSE OF THIS  
MEMBERSHIP/RESIDENT GUIDE  
IS TO FURTHER INTRODUCE  
SIGMA CHI AND ETA KAPPA  
CHAPTER AT MISSOURI  
STATE UNIVERSITY.

THIS SERVES AS A REMINDER  
TO WHAT IT MEANS TO AFFILIATE  
WITH THE SIGMA CHI FRATERNITY  
AND WHAT OPPORTUNITIES AND  
EXPECTATIONS AWAIT OUR MEMBERS  
AND MEMBER RESIDENTS OF OUR  
NEW CHAPTER HOUSE.



## CREATE LIFELONG FRIENDSHIPS

*The most valued benefit to joining a fraternity is the ability to create friendships that last a lifetime. Though you make friends in college through other avenues, the closeness you can experience in Greek life sometimes fosters closer connections than you might make otherwise. When you find the fraternity that is right for you and your college experience, it can be a rewarding experience for a lifetime. Spending time with fraternity brothers and working toward shared goals is very rewarding if you commit to the journey.*

## SUPPORT NETWORK

Sigma Chi offers a support network for active members. Fraternities commonly offer academic support. Like many fraternities, Eta Kappa Chapter has grade point standards for membership and a focus on academic achievement is always at the forefront. Your fellow fraternity brothers help emphasize accountability to assist new members at adjusting to the rigorous demands of college. A common motive for membership is social opportunities. Brotherhood and social interaction are core elements of fraternities. Social belonging helps students feel more comfortable in the college community.

## PROFESSIONAL AND MENTORING OPPORTUNITIES

Fraternities typically have some professional development and service opportunities. In fact, while social motives are more common, some fraternities make community service a staple of membership. Opportunities for community involvement, resume development and leadership experiences can all help you grow personally and professionally. Many fraternities have extensive alumni organizations that are great networking resources after graduation as well. Eta Kappa Chapter offers mentoring opportunities where you can meet and get advice from alumni through interaction at Chapter workshop events.

## MAKE CONNECTIONS

Though most people immediately think about the connections they could make on campus with peers while in a fraternity, it's also beneficial to think about the connections you can make with alumni and the future members of your chapter. Sigma Chi offers opportunities for alumni to stay connected with the on-campus community, which will give you the chance to network with people in your chosen field. The Greek life connection is usually a strong one, and alums might be more willing to give you tips or help you with your career choice. You never know what opportunities these relationships could bring, and you will have the chance to help future Sigma Chi brothers once you become established in your career as well.

## BUILD YOUR RESUME

Being part of Sigma Chi Fraternity can also boost your resume. Your Sigma Chi experience could especially appeal to employers who have an affiliation with their own fraternity realizing that you made a commitment that you kept throughout your years in school. The skills you learn as a member could be marketable to future employers, too.

## LEARN NEW SKILLS

As a member of Sigma Chi, you will have the opportunity to develop leadership skills or help to organize events, allowing you to build new skills you might not have otherwise learned while focusing on studying alone. You will also be spending time with people outside of your life experiences, so you can take the opportunity to learn from those brothers and to step outside of your comfort zone.

## VOLUNTEER IN THE COMMUNITY

As you may already know, a significant part of Greek life is about volunteering. Sororities and fraternities choose philanthropy that they devote time and energy to throughout the year. By being a member of Eta Kappa Chapter of Sigma Chi, you will automatically be included in philanthropy events and have the chance to take part in volunteerism while also spending time with friends. You could also give back to a cause that you are passionate about.

## BALANCE ACADEMIC AND SOCIAL ACTIVITIES

Sororities and fraternities also provide the chance to merge the social with the academic. High achieving Chapter members are afforded scholarship opportunities supported by Eta Kappa Chapter alumni. Spending time with like-minded peers could help you find other students to study with or to help you understand difficult course concepts. As you focus on your studies, you will also be taking time to be social while engaged in Greek life. In addition to devoting time to academics, building social hours into your life at school is a great way to keep your life balanced.



## WELCOME TO OUR FRATERNITY

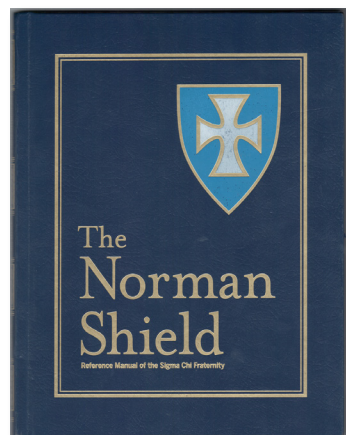
THE ETA KAPPA CHAPTER OF  
SIGMA CHI FRATERNITY ALUMNI  
WELCOME YOU TO OUR FRATERNITY AND  
TO OUR NEW CHAPTER HOUSE  
AT MISSOURI STATE UNIVERSITY.

THIS RESIDENCE FACILITY IS  
EXCLUSIVELY FOR ACTIVE MEMBERS  
OF ETA KAPPA CHAPTER OF THE  
SIGMA CHI FRATERNITY.

THE RESIDENCE IS OWNED AND OPERATED  
BY THE SIGMA CHI HOUSE CORPORATION  
OF SPRINGFIELD, MISSOURI.

*Our Fraternity is a recognized campus organization and is thereby subject to the Code of Student Rights and Responsibilities as outlined in the Missouri State University website link: [www.missouristate.edu/StudentConduct/code-of-student-rights-and-responsibilities.htm/history](http://www.missouristate.edu/StudentConduct/code-of-student-rights-and-responsibilities.htm/history)*





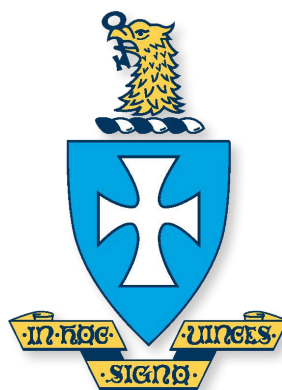
## THE NORMAN SHIELD

The Norman Shield manual was first written in 1929, to preserve the tradition and lofty ideals upon which the Fraternity was founded. The manual is revised periodically to keep with the changing times of the Fraternity.



## THE PLEDGE BUTTON

The pledge button is a small Norman Shield of blue bearing a white Sigma Chi cross. The 25th Grand Chapter approved the Fraternity's pledge button in 1901.



## THE CREST

The crest is a Norman Shield of blue bearing a white Sigma Chi cross, the shield being surmounted by a scroll and a crest of an eagle's head holding a key. The public motto, "In Hoc Signo Vinces" is placed below the shield on a scroll. The meaning of our public motto is, "In this sign you will conquer."



## THE FLAG

The flag is rectangular, with the upper half being blue, the lower half being old gold, with a white Sigma Chi cross in the center. The Fraternity adopted the flag design in 1899.

## THE BADGE OF SIGMA CHI

The badge consists of a Sigma Chi cross of gold and of white and black enamel, contains two chains connecting the upper arms, crossed keys on the upper arm, and eagle's head on its right arm, a scroll on its left arm, clasped hands and seven stars on the lower arm, and the Greek letters, ΣΧ, in the center.



## KRACH TRANSFORMATIONAL LEADERS WORKSHOP

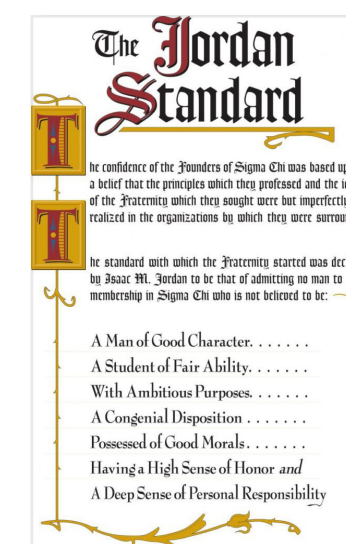
Krach Transformational Leaders Workshop is a four-day leadership immersion event that focuses on the personal and professional development of Sigma Chi undergraduates, developing them into Transformational Leaders in their chapters and on their campuses. Each Sigma Chi student will be led by certified Sigma Chi Facilitator Academy faculty members in small group sessions, designed to cultivate authentic discussions about leadership challenges our young men face daily. To learn more, visit [www.workshop.sigmachi.org](http://www.workshop.sigmachi.org).

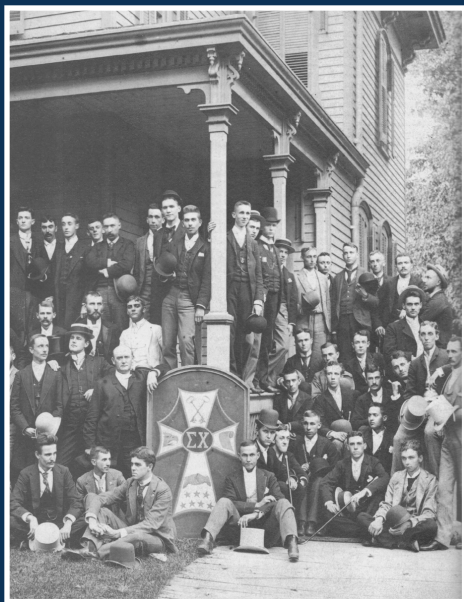


## THE JORDAN STANDARD

The Jordan Standard with which the Fraternity started was declared by Isaac M. Jordan to be that of admitting no man to membership in Sigma Chi who is not believed to be:

- A Man of Good Character . . . . .
- A Student of Fair Ability . . . . .
- With Ambitious Purposes . . . . .
- A Congenial Disposition . . . . .
- Possessed of Good Morals . . . . .
- Having a High Sense of Honor *and*  
A Deep Sense of Personal Responsibility





## SIGMA CHI FOUNDATION

THE SIGMA CHI FOUNDATION WAS  
FOUNDED IN 1939 AND SERVES TO  
FUND THE CREATION, DEVELOPMENT AND  
OPERATIONS OF LEADERSHIP INITIATIVES  
AFFECTING OUR MEMBERS.

THIS INCLUDES SUPPORT OF THE  
2021 LAUNCH OF SIGMA CHI'S NEW  
TRANSFORMATIONAL LEADER PLATFORM  
WHICH IS A SERIES OF CERTIFICATE  
PROGRAMS DELIVERED TO EVERY  
SIGMA CHI UNDERGRADUATE MEMBER  
ADMINISTERED BY THE SIGMA CHI  
LEADERSHIP INSTITUTE (SCLI).

## SIGMA CHI HORIZONS PROGRAM

Horizons is a leadership development experience for qualified undergraduate Sigma Chi's with at least one year remaining in college, and who wish to improve their understanding of leadership as it relates to personal development, group dynamics, and intentional efforts to make positive change in the world.

The Horizons program is held in an ideal setting for outdoor adventure, interactive learning, and inspired reflection. Participants begin their experiences through a series of reflective and thought-provoking questions in the application process, continue learning through pre-session readings, and then immerse themselves in valued learning experience that engages their minds and bodies on site in Snowbird, Utah.

Finally, participants continue their Horizons experience through post-session mentoring by alumni and follow-up electronic leadership lessons and guidance.

The program is offered at no cost to the participants thanks to the generous support of the Sigma Chi Foundation and the Sigma Chi Canadian Foundation.

## CHAPTER OPERATION and PERSONAL ACCOUNTABILITY

Since the early 2000's, Sigma Chi Fraternity has made a concerted effort to provide members with the resources needed to lead by example when facing challenging issues within the campus Greek community such as alcohol and drug abuse, hazing and sexual misconduct.

In 2019, a new hybrid learning curriculum conducted by Sigma Chi was launched to touch on these issues and to encourage personal accountability. The Values Based Decision Making (VBDM) program is available to our members to address accountability and the challenging issues on our college campuses today from a positive behavioral approach.

VBDM is supported as a personalized learning experience that is made available to chapter members through educational settings including Chapter sponsored events, Sigma Chi On-Line, province conferences and by attending the annual Krach Transformational Leadership Workshop, hosted by Sigma Chi Fraternity. The core curriculum encourages our undergraduate brothers to live a more responsible life by holding self and others accountable to Sigma Chi values.

*There are twenty-two Eta Kappa alumni  
volunteers serving in a range of capacities:*



The Chapter Advisory Board (CAB) assists with educating and motivating the active members to pursue the fundamental mission of Sigma Chi. This alumni Board serves as a liaison among the Chapter, University, and International Fraternity. Alumni guidance and mentoring while assisting the forward planning efforts are key contributors to the Chapter's successful operation.



Eta Kappa Education Fund is a Missouri charitable corporation that serves as the primary fund raising and leadership support organization for the Active Chapter. Together with the alumni supported Founder's Fund for Scholarship, alumni provide twice yearly tuition scholarship awards to qualifying undergraduate Sigma Chi students.



The MSU Student Housing Assistance Corporation (MSU SHAC) was established as a Missouri charitable fund for the specific purpose of funding improvements, reducing debt, and lowering housing costs for our Sigma Chi active members who are residents of our new Chapter House.



The Sigma Chi House Corporation of Springfield, Missouri was established in 1968. This Missouri Benevolent Corporation, owns and manages real estate property for the benefit of the Active Chapter.

**FRIENDSHIP,  
JUSTICE,  
& LEARNING**

THE ROOTS OF  
OUR FRATERNITY

**SIG / SIGS**

THE RECOGNIZED  
NICKNAME OF  
SIGMA CHI

**WE ARE AN  
INTERNATIONAL  
FRATERNITY**

THE FRATERNITY HAS  
UNDERGRADUATE AND  
ALUMNI CHAPTERS  
IN BOTH THE UNITED  
STATES AND CANADA





# The History of Eta Kappa Chapter of Sigma Chi Fraternity

## WHERE IT STARTED

In 1968, several freshmen students living at Blair-Shannon dormitory gathered after attending various formal fraternity recruitment events conducted by Southwest Missouri State College (SMS). These individuals discussed the merits of each fraternity presentation and arrived at the decision to start their own fraternity. After investigating several national fraternity options, and through the encouragement from area Sigma Chi alumni from other chapters, it was decided to bring Sigma Chi to Southwest Missouri State.



THE CREST OF  
NU SIGMA CHI  
Est. Fall 1968

Sigma Chi International and the College granted recognition by authorizing a new local fraternity organization identified as Nu Sigma Chi in the fall of 1968. Nu Sigma Chi undergraduate membership quickly grew to 45 members progressing toward their goal on April 3, 1971, when Eta Kappa Chapter of Sigma Chi was chartered. Our Chapter thrived through the ensuing decades earning multiple Peterson Significant Chapter Awards during those years.

## THE HOUSE ON WALNUT STREET

The Chapter House was moved to Walnut Street, a historical residential neighborhood that was originally a private residence and today is Ebbet's Field Sports Bar and Patio. Sigma Chi at Southwest Missouri State University became a leader among fraternities



during the decades of the 80s and 90s. The Walnut house was sold to make way for a newly constructed Sigma Chi house on Elm Street near campus where many MSU Greek organizations are located today.

## NATIONALLY RECOGNIZED SIGNIFICANT SIGS

The 1990s were a great success for Eta Kappa Chapter with our Sigma Chi Chapter ranking as one of the best experiences that Greek Life had to offer at Southwest Missouri State. Two Eta Kappa Chapter alumni from the early 1990s have recently been recognized nationally as Significant Sigs, one of the highest honors bestowed upon alumni by Sigma Chi International. Writer, director, and film producer Ted Melfi (1994) who co-wrote and directed movies like *St. Vincent* and *Hidden Figures* for which he received an Oscar Nomination for Best Picture and Best Adapted Screenplay; and Marc Buncher (1993) CEO of Siemens Mobility of North America, who is responsible for more than 4,000 employees and 30 facilities across the USA, were both recognized as Significant Sigs in 2022 and 2023, respectively.

## BRONZE BEAR AWARD

Eta Kappa Chapter of Sigma Chi alumnus and founder of our Chapter Tim Reynolds, in memory of his wife Judith Enyeart Reynolds, made the largest scholarship gift in Missouri State University's history, and he and Judy are recognized by receiving the Bronze Bear Award in 2021

which acknowledges special support and achievement at Missouri State. In recognition of Tim Reynolds' contribution, University president Cliff Smart stated, "these gifts have transformed Missouri State and the lives of students forever."

## THE IMPORTANCE OF ALUMNI MENTOR-SHIP

Now, more than ever, it is important and appropriate to also celebrate all that is good about the fraternity experience. We want Sigma Chi to be a positive influence for our members, the campus and community. The early 2000s were not so kind to our Chapter and our alumni learned a valuable lesson to always stay engaged with our active chapter and to serve as mentors to make sure the ideals of Sigma Chi are honored.



SIGMA CHI OMEGA

From 2006 through 2012, our Chapter was suspended as a campus organization at the recommendation of both the University and Sigma Chi International due to numerous disciplinary actions and failure of the active membership to meet financial commitments. In 2012, with the help of an interested group of students led by Chapter legacy, Chris Wolf, and assisted by a team of Sigma Chi International representatives and Chapter alumni, this group petitioned Sigma Chi and the University to form Sigma Chi Omega Colony, which was recognized as a returning campus organization in April of 2012.

## STRENGTH OF CHARACTER MAKES A COMEBACK

On March 1, 2014, the Eta Kappa Chapter of Sigma Chi was re-chartered in a ceremony that initiated 35 Sigma Chi Brothers, signaling the return of Sigma Chi to Missouri State University.

Our message for the dedication ceremony was "Strength of Character Makes a Comeback", which was intended to reference our Fraternity's Jordan Standard which sets forth the ideals for our members to seek "a man of good character." This headline

was also meant to underscore our effort to bring Sigma Chi back to a position of leadership at Missouri State University to enhance the out-of-classroom education and leadership opportunities that fraternity membership offers. Today there are nearly 1,200 Eta Kappa Chapter of Sigma Chi alumni who have been initiated into Sigma Chi at Missouri State.

## A BRAND NEW FIRST CLASS CHAPTER HOUSE

In 2014, the House Corp was reestablished as a Missouri Benevolent Society organization and work was underway to secure housing for Eta Kappa. After



purchasing two adjacent properties, one of which served as temporary housing for our Chapter, our alumni were able to 'pay-it-forward' for current and future undergraduate Sigma Chi members by building a first-class residential facility.

This unique, apartment style design offers the best available in fraternity housing at Missouri State. The first-floor common area features guest reception, The Founder's Library room, the multi-purpose Chapter event and meeting room and learning and computer center along with catering kitchen and covered porch with sitting wall.

The message this new house sends to our active chapter should not be lost. We are providing them with a new home because we know how important the chapter house was to us as undergraduates and we recognize the positive impact of Sigma Chi on our lives. We have 22 chapter alumni volunteers across four separate organizations who are focused on helping the Sigma Chi experience be the best it can be. There is considerable work to be done but we feel that we are up to the challenge.

Our alumni commitment shows that Sigma Chi is a strong Fraternity and we are investing in our future. We will continue to have Sigma Chi alumni who financially support Missouri State and make the University proud by what we achieve in life.

As alumni, next to our life-long friendships we value so much, our chapter houses are our most valuable asset. That's where our future leaders emerge to pursue their education and build lifelong friendships of their own. Our chapter house can be an anchor for our alumni when they return to celebrate their time at Missouri State University.

## PAY-IT-FORWARD

Being able to 'pay-it-forward' for current and future undergraduate Sigma Chi members while still being around to witness the impact is one of the most meaningful forms of giving.

This is a time to reflect on your Sigma Chi experience. Remember the impact this brotherhood has had on you and imagine how this chapter will affect future brothers. Eta Kappa has given each of us a memorable experience; it is our duty to honor our membership and invest in the future of Sigma Chi at MSU. In keeping with our motto—In Hoc Signo Vinces—please consider continuing to support this brotherhood.

Visit  
[sigmachimostate.com/support-eta-kappa/](https://sigmachimostate.com/support-eta-kappa/)  
to learn the many ways you can pay-it-forward.



PERSONAL RESPONSIBILITIES



HOUSE CORP

The House Corporation will carry the primary responsibility for operation of the Chapter House and decisions involving our residents and handle all financial matters.

HOUSE CORPORATION and the CHAPTER HOUSE

The House Corporation is responsible for operating the Chapter House in cooperation with our residents, our Resident Director, our House Manager, as well as with our independent property management firm JNM Realty Group. Services provided by the House Corporation will include maintaining signed lease agreements with residents, establishing resident’s preferred method of lease and security deposit payments, collection of lease and deposit payments, maintaining payment account records for residents and responding to resident requirements. Our House Corporation pays its expenses from lease payment revenue. The House Corporation is supported by alumni donations and maintains nominal cash reserves while operating the house on a break-even budget for each academic year.

RESIDENTS and CHAPTER MEMBERS

Alumni and friends of Eta Kappa Chapter have invested over \$3.5 million to have a first-class, apartment style residential facility for our undergraduate Sigma Chi members. We intend to protect that investment by calling upon each Chapter member to do their fair share to keep the residence clean and to respect the rights of our residents to have a safe and well-maintained Chapter House. If a resident, guest, or invitee should cause damage to the Chapter House or its contents, that individual will be responsible to fix the damage, replace the item or pay for the cost of the repair or replacement. It is expected that residents, Chapter members and guests will clean up after themselves and at times for others.

MANAGEMENT TEAM

Our residents will look to their House Manager as the first point of contact involving operation of the Chapter House. The House Manager will have specific responsibilities for which he will earn a lease payment stipend to ensure that basic operation standards are routinely being met. The House Manager will communicate with our Chapter Resident Director and Property Manager to ensure that the common areas of the House are clean and well maintained. Proper trash management will be the responsibility for all residents with the House Manager working to make sure everyone is doing their fair share of the work to keep the facility in the best condition possible.

PROPERTY MANAGEMENT

Independent property management provider, JNM Realty, will assist with checking on reach resident and providing key fob access to exterior doors and entry codes for apartment doors. JNM Realty will be available for assistance with facility maintenance and repairs and will coordinate with Resident Director and House Manager.



MEMBERS IN GOOD STANDING

Members carry the responsibility and obligation to maintain their membership in the Chapter in good standing. Good standing generally means that the Member has fulfilled his financial obligation for dues and other expenses to the Chapter and has not created any problems for the Chapter such as through the violation of any Chapter or Missouri State University policies or similar matters. The failure to maintain good standing could result from a failure to achieve a certain grade point average as a student or if the Member does not comply with Missouri State University policies or conduct requirements. Maintenance of active undergraduate student status is a requirement of being a member in good standing with Eta Kappa Chapter of Sigma Chi. A Chapter initiate who drops out of school after having been initiated, will remain a Member of Sigma Chi and will remain an initiate of Eta Kappa Chapter, but the former student will no longer be considered an active Member of the Chapter and will automatically be placed on alumnus status with Sigma Chi Fraternity as opposed to undergraduate active status. Each member is solely responsible for his own conduct and Eta Kappa Chapter of Sigma Chi is not responsible for the conduct of any member without the prior granting of specific, express, unconditional, explicit, and duly approved authority for such conduct by the Chapter.

ETA KAPPA CHAPTER OF SIGMA CHI PRACTICES

The inherent value of the Fraternity lies in the willingness of its individual members to achieve the goals of the Fraternity. When the Chapter initiates a Member into the Fraternity, that Member becomes entitled to participate in membership meetings and authorized Chapter functions and to use the facilities and premises belonging to the Chapter. The Chapter, acting through its own duly constituted procedures and pursuant to the actions of its members, selects its own officers, assesses dues, participates in the operations of the Chapter House, selects pledges, and initiates new Members. Other activities upon which the Chapter engages include promoting leadership education, conducting philanthropic efforts, intramural athletics, promoting fellowship, participating in campus and intra-fraternity programs, and conducting social events.

SIGMA CHI FRATERNITY and CHAPTER POLICIES and GOVERNANCE

Details regarding Sigma Chi Fraternity and Chapter policies and governance can be obtained by visiting [www.sigmachi.org](http://www.sigmachi.org) and selecting resources tab. Below are several important guidelines:

The Constitution and the bylaws of the International Sigma Chi Fraternity (the Fraternity) are referred to as Governing Laws. There are three layers of governance: the Constitution, the Statutes and Executive Committee Regulations.

Eta Kappa Chapter of Sigma Chi functions as a group composed of undergraduate students. Specifically, the Chapter is an unincorporated association under the laws of the State of Missouri. Eta Kappa Chapter of Sigma Chi active members are expected to abide by the Fraternity’s standards and policies which include abiding by applicable local, state, and federal laws as well as Eta Kappa Chapter and Missouri State University complementary and additional guidelines. Active Members consent to certain terms and conditions with the Chapter and with the International Sigma Chi Fraternity. Eta Kappa Chapter of Sigma Chi is a locally self-managed, self-operated and self-financed organization. As a condition of being a Chartered Chapter of Sigma Chi, active Members and the Chapter are required to follow the lawfully adopted rules and regulations of the International Sigma Chi Fraternity as outlined in the Governing Laws and Policies. To learn more about Eta Kappa Chapter of Sigma Chi, visit <http://sigmachimostate.com/>.

Independent Property  
Manager Contact  
JNM Realty Group LLC  
(417) 823-3950  
[www.jnmrealtygroup.com](http://www.jnmrealtygroup.com)

See Back Cover of  
this Book for Contact  
Information Regarding  
House Matters and Other  
Questions or Inquiries



**ETA KAPPA CHAPTER OF SIGMA CHI GOVERNANCE**

The Chapter membership elects officers and an Executive Committee for the purpose of conducting chapter activities and appoints a Judicial Board which works in cooperation with the Grand Praetor and Chapter Advisory Board to investigate and make recommendations, act in response to alleged misconduct among pledges and active members and conduct an appeal process.

**CONSUL**

President of the chapter, presides over chapter meetings and other chapter affairs and activities; responsible for the security of the charter; oversees a variety of chapter functions; possesses a working knowledge of the Governing Laws, risk management regulations, chapter bylaws and policies, campus and inter-fraternity regulations and procedures; maintains a close relationship and communication with chapter advisors, the house corporation, Sigma Chi Fraternity Headquarters’ staff, alumni, as well as administrative officials at Missouri State University Office of Student Engagement/Fraternity & Sorority Life and inter fraternity representatives; maintains current knowledge of all chapter and member developments and activities and follows up on all operations and programs by interacting with the appropriate officers; presides over the chapter meetings and such chapter affairs as appropriate; immediately upon election, the Consul develops a program of goals toward which he and his executive committee shall strive to achieve during his term; works with the Grand Praetor (regional director for Sigma Chi Headquarters), the Chapter Advisory Board, chapter alumni and Headquarters staff in guiding the affairs of the chapter; maintains a broad knowledge of all chapter activities and areas of operation; required to live in the Chapter House to work closely with the House Manager and Resident Director to maintain the primary responsibility to see to it that the Chapter House is operated responsibly and within the guidelines set forth in this guidebook and terms and conditions set forth in the resident’s signed lease agreements and addendum.

**PRO CONSUL**

Serves as vice president or chief operating officer of the chapter; works closely with the Consul in carrying out chapter operations; he is chairman of the chapter’s executive committee, coordinates the work of the chapter’s other committees and serves as their liaison between the chapter and executive committee; must be prepared to assume the duties of the Consul, should he be absent or unable to serve; must carry out other duties as the Consul requests; assists the Consul in ensuring that chapter affairs and operations are conducted thoroughly and efficiently, that all chapter activities are carried out in the best manner possible, and that all members and pledges conduct themselves always in the best interests of the Fraternity and the chapter; assumes the full responsibilities of the Consul’s position in the Consul’s absence or incapacity and preside over and administer the affairs of the chapter executive committee in addition to directing and coordinating the work of all chapter committees and Judicial Board.

**ANNOTATOR**

Keeps accurate records, reports and minutes of chapter meetings; transcribes those records into the chapter minute book; maintains the chapter’s bylaws, administrative files, and records, including the chapter’s permanent record of member data; coordinates the chapter programs in campus and community service and philanthropy, and he handles chapter public relations and publicity.

**QUAESTOR**

Treasurer of the chapter; responsible for collecting and safeguarding all funds due to the chapter; prepares the budget before the start of the chapter’s fiscal year; presents budget to the chapter’s executive committee, members, and advisors for approval; provides monthly and semiannual financial reports to Headquarters, advisors, and the chapter’s Grand Praetor; uses an approved bookkeeping system to keep accurate records of all the chapter’s financial operations; consistently reviews records and activities to ensure the chapter operates within its means; sees that the chapter’s financial obligations to the Fraternity and other creditors are met promptly; completes the chapter’s federal and state tax returns and other reports; responsible for ensuring the awareness and fulfillment of chapter and individual financial obligations throughout the chapter membership.

**RISK & HOUSE MANAGER**

Assists in the development and implementation of the chapter’s safety/risk management program; coordinates the risk management education of members, pledges, and employees, and assists other officers in incorporating safety and risk management-related precautions into their programs; with the help of the house corporation, Chapter Advisory Board, Executive Committee, officers, and members, he addresses concerns related to building maintenance, safety, fire, health, the use of alcohol or illegal drugs, hazing or sexual abuse; coordinates chapter efforts regarding cleanliness, safety, care, and maintenance of the chapter house; works closely with the House Corporation to ensure that all safety measures are in order.

**TRIBUNE**

Coordinates the preparation and mailing of all necessary chapter correspondence; assists the Consul and other officers in preparing and submitting officer and chapter reports on time; supplies the Headquarters, Grand Praetor, advisors, and university officials with reports of new officers and other information as required, in charge of the alumni relations program.

**CHAPTER EDITOR**

Publishes at least two newsletters during each academic year in the interest of highlighting curlease alumni and undergraduate activities; furnishes similar material to The Magazine of Sigma Chi, including quarterly news reports, photos, and copies of each chapter publication; maintains a publications file, which should include back issues of the chapter newsletters, publications from other chapters and related material from the International Fraternity, coordinates the publication of other chapter printed material and assists the Tribune in maintaining accurate mailing list.

**SCHOLARSHIP CHAIRMAN**

Seeks to create and maintain an environment conducive to scholastic achievement among members and pledges; assists the chapter’s officers in emphasizing academic priorities; provides information on educational resources and assistance available to initiated and pledge brothers, including those available in the chapter, through the International Fraternity and Missouri State University; plans and conducts chapter education programs, including faculty discussions and chapter awards; serves as the chapter’s liaison to the Sigma Chi Foundation; responsible for educating the entire chapter on the scholarships that are available to them through the Foundation as well as scholarships supported by Eta Kappa Chapter alumni.

**MAGISTER**

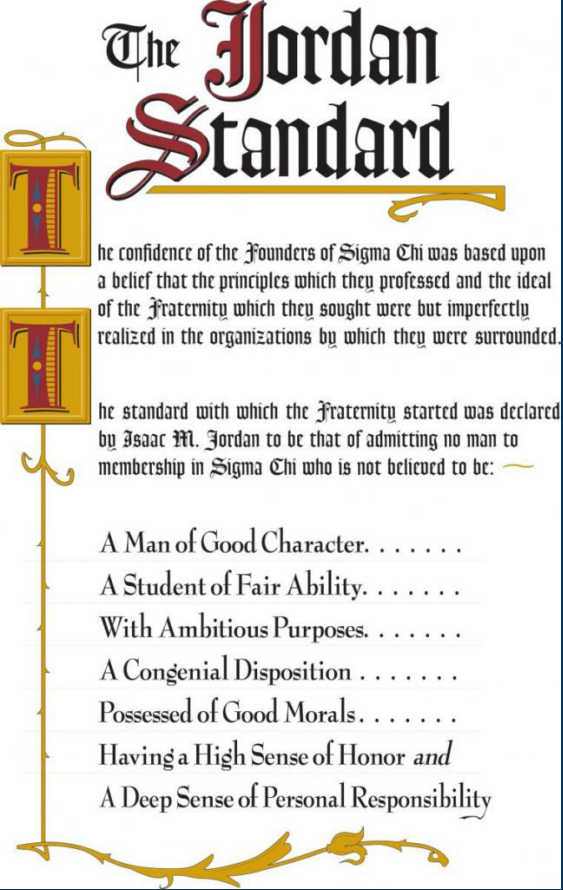
Prepares the pledge brothers for initiation into Sigma Chi; directs and conducts the Preparation for Brotherhood pledge education program; helps instill in the pledges the ideals of Sigma Chi; fosters the pledge’s pride in, and commitment to, the Fraternity through lessons of learning, participation, and responsibility; enforces (along with all members of the chapter) the Fraternity’s prohibition of hazing or any activities that are embarrassing, trivial, deceptive, demeaning or contradictory to academic responsibilities or Sigma Chi’s ideals and policies.

**RECRUITMENT CHAIRMAN**

Plans, organizes, and coordinates a year-round chapter recruitment program; assists the chapter in measuring potential members against the requirements of The Jordan Standard and the ideals of the Ritual; helps the chapter develop its own set of specific membership criteria in addition to ensuring that every brother, and not only a few individuals, participate in membership recruitment; coordinates all communications with prospective members, including all printed recruitment matter and ensures adherence to the recruitment regulations of the Fraternity and campus.

**KUSTOS**

Serves as the sergeant-at-arms; preserves the privacy of the chapter room; assists with chapter meetings and other specified gatherings; administers the Ritual for Life post-initiation training program; oversees preserving the chapter’s Ritual belongings.



THE JORDAN STANDARD IS OUR GENERAL STANDARD  
FOR JUDGING WHETHER A MAN IS WORTHY OF  
ENTRANCE INTO OUR BROTHERHOOD. THE CREED IS A  
STATEMENT OF MEMBERS’ BELIEFS AND IDEALS. THE  
SPIRIT CAPTURES THE DRIVE BEHIND OUR FRATERNITY’S  
FOUNDING AND IS BASED ON THOUGHTS OF FRIENDSHIP.





**Missouri State**  
U N I V E R S I T Y

## CHAPTER REQUIREMENTS TO LIVE IN THE CHAPTER HOUSE

Unlike many university settings, Missouri State University requires first academic year freshmen to live in campus provided residence halls. Living in campus provided housing is required of all single students under 21-years of age who have earned fewer than 27 hours of transferable credits after high school graduation. This policy limits the number of Eta Kappa Chapter active members who can consider living in the Chapter House.

Consequently, the Active Chapter enacted a revision to their bylaws that requires sophomore class members to live at least one academic year in the Chapter House, should there be vacancies to fill the 22-man capacity house.

Residency at the Chapter House is open to qualifying active Chapter members who have met the University guidelines for living off campus.

The House Corporation offers incentives to encourage Sigma Chi residents to commit to multiple, consecutive academic years of living in the Chapter House.



## CHAPTER HOUSE RESIDENT FEATURES

### Who can reside in the Chapter House?

Any full-time Missouri State University students who are Eta Kappa Chapter of Sigma Chi active members, in good standing with both the University and with the Chapter may reside at the Chapter House. Missouri State University identifies undergraduate students carrying six or more credit hours in the fall or spring semester as being considered full-time students.

### How is the Chapter House designed?

The Sigma Chi Chapter House is available for the benefit of our entire active chapter and offers a unique apartment-style floor plan as well as first floor common area featuring a library and study room, computer room, guest reception and guest restrooms along with a catering kitchen, laundry room, storage space and large meeting room for various events. Each single and double occupancy apartment includes a full bath, kitchenette, study desk, individual closet, storage space and lockable safe. The House Corporation has paid to furnish the entire facility for our resident's use.

### What features are included with each apartment?

Each apartment is serviced with individual heating and cooling units featuring individual thermostat controls for each apartment and the entire facility provides high speed internet access. Each apartment also has its own 55" monitor.

### What is the resident capacity of the Chapter House?

Both single and double occupancy apartments are available for a total capacity of 22 residents. There are six single resident apartments and eight double occupancy apartments.

### What about safety and security?

Safety and security features include fire suppression sprinkler systems throughout the facility, monitored smoke detection, secured key-lock system for individual apartments and outer doors, individual locking safe for each resident, outdoor lighting and video surveillance camera security for exterior parking lot, interior common areas, and building access points and secured bicycle rack.

### What is the lease term for the Chapter House?

This new facility houses Sigma Chi residents in accordance with the Missouri State University academic calendar year, August 1<sup>st</sup> through May 31<sup>st</sup>, which is a ten-month lease term. For the months of June and July, the Chapter House will be closed for cleaning, repairs, and routine maintenance. This is consistent with campus housing facilities and is necessary to allow thorough inspection of each apartment and common areas and to protect the alumni investment in the property. Those Sigma Chi active member residents who plan to attend summer school at Missouri State University are encouraged to make temporary living arrangements outside of the Chapter House for the summer session.

For Information on the Fraternity Life at Missouri State University,  
Visit the University's Website  
[www.missouristate.edu/studentengagement/FSL/](http://www.missouristate.edu/studentengagement/FSL/)



# rules & regulations TO MAKE THE MOST OF FRATERNITY LIVING

## LIVING WITH A ROOMMATE

Most Missouri State University students will have had the experience of sharing a room with someone as is required by the University for first year freshmen students. Even though our Chapter has the advantage of a fraternal connection among residents, living with others requires open communication, respect, trust, flexibility, a willingness to share, courtesy, and remembering to be concerned about the needs and feelings of the other person or people in the room. When making decisions about how to live in this shared space, residents must take into consideration the impact they have on one another. Active member residents will select and agree upon their choice of roommate and notify our Property Manager well in advance of move-in date to obtain room assignments so property management records can be updated accordingly.

## ROOM CHANGES

No resident room assignment changes are permitted without prior approval and only after our Property Manager is notified in writing, by email or text message in advance requesting a change of rooms. Room assignments must be honored with changes only being allowed with prior approval from the Property Manager and House Corporation. Double occupancy residents will sign individual lease agreements and their lease payments and deposits will be made separately subject to terms and conditions outlined in the agreement. Lease deposits and lease payments are directly associated with each resident's assigned room thereby requiring room assignments to always be recorded accurately.

## COMMON AREA DAMAGES

In the event of damages to a common area, including furniture, fixtures, doors, walls, windows, floors and if excessive cleaning charges and trash removal should be necessary, the House Corporation reserves the right to charge the entire chapter membership for reasonable damage charges if the responsible person(s) causing such damage or contributing the requirement for trash removal and cleaning cannot be identified.

## ROOM DECORATIONS

Nails, screws, double-stick tape, packing tape, or duct tape on or in the walls, ceilings, furniture, or fixtures is prohibited. It is recommended to use 3M Poster Strips with Command™ Adhesive for light weight pictures mounted on walls. Alcoholic beverage signs are not allowed as window displays. No window display may be permitted if it substantially detracts from the aesthetics of the Chapter House. Fire alarms pull stations, speakers/horns, fire extinguisher cabinets, smoke detectors, and exit signs must not be covered, and exits must not be blocked. Decorations, unless nonflammable, cannot be used to cover entire hallway areas, ceilings, walls, or doors, due to the fire hazard these decorations present. (All decorations must have a 1-foot fire break for every 3 feet.) String lights must be UL-approved and low wattage.

## ROOM MODIFICATIONS

As a safety precaution, the following guidelines for room modifications within an apartment or common areas must be followed: No House Corporation-owned furniture or equipment may be removed from the room, apartment, or common area. No furnishings shall restrict exiting from any portion of the room or be a safety hazard to persons walking around the room. Residents must use beds provided by House Corporation and cannot bring additional bed frames into the Chapter House. Modifications must not include any materials or designs of a hazardous or flammable nature, including suspended flammable fabrics or carpeting applied anywhere except as a floor covering. Residents must be prepared to respond to concerns of the Property Manager about the hazardous nature of decorative materials and must remove materials that are judged by Property Manager and House Corporation to be particularly hazardous. Modifications must not block the heating or cooling system or require the removal or remodeling of electrical fixtures or outlets. Twelve inches of free space must be maintained in front of all air vents. Modifications must not block a doorway. The door must be able to open perpendicular to the door opening. Light fixtures must not be tampered with, and its light bulb must not be removed or switched out with a colored bulb. No lofts, risers, or concrete/cinder blocks are permitted. No furniture may be raised off the floor. Beds must remain in their standard configuration (e.g., headboard). Mattresses must be used with the bed frames and not placed directly on the floor. Personal mattresses are not permitted. Excessively heavy items should not be placed on furniture or shelving provided by the House Corporation.

## ROOM ENTRY

The Chapter members, House Corporation Resident Director and Property Managers respect the resident's rights to privacy within the Chapter House and will strive to protect and guarantee this privacy. Room Entry is designed to ensure only legal and appropriate entry into a resident's room by specifically authorized Property Manager representatives and to define the conditions under which authorized personnel may enter a resident's room. Rooms may be entered under the following conditions: To provide room maintenance inspections or repair service. When there is reasonable cause to believe an emergency has arisen that requires that the room be entered. When a resident permanently vacates the room. To identify if an apartment is ready for a new resident.

## PETS

Pets under the control of an adult are allowed on the outer premises of the property but pets are not permitted to be kept within or even temporarily allowed inside the residence facility. An exception would be service animals trained to assist persons with disabilities.

## PARKING

Each resident is provided with one designated parking space. With limited parking available, only one space per resident is allowed. Guest parking and handicap parking spaces as required by City of Springfield must remain available for such use.

## BICYCLE STORAGE

Bicycles are prohibited from being stored inside the common area and individual apartment units or stairwells. Residents are encouraged to use the bicycle rack provided for their convenience located near the Chapter House parking area. When keeping a bike in the storage rack, always keep it securely locked. Storage of bicycles Chapter House hallways, common areas or stairwells is not permitted. Any bicycle stored or chained in an unauthorized area inside or outside the halls will be removed by the Property Manager.

## FIREARMS AND WEAPONS

The possession and/or use of items such as firearms, handguns, ammunition, lethal weapons, blowguns, explosives, noxious materials, stun guns, pellet guns, dart guns, darts, paint guns, bows and arrows, fireworks, incendiary devices, and dangerous chemicals in the Chapter House or anywhere on the property is strictly prohibited. Possession of weapons on the Chapter House property or inside the Chapter House as well even by licensed holders of concealed handguns is strictly prohibited. Lethal weapons include any object so designed or adapted to be capable of taking a human life. Firearms, a blackjack, a knife with a blade over two inches in length (including pocket, hunting, and collectible knives), a slingshot, metal knuckles, and a razor have been held to be lethal weapons. Any Chapter House resident, guest, invitee, or non-resident active chapter member possessing or using above-described prohibited items anywhere in the Chapter House or on the Chapter House property will be subject to disciplinary action in accordance with Chapter, University and Sigma Chi Headquarters and Missouri State University disciplinary guidelines.

## CONTROLLED SUBSTANCES

Any Chapter House resident, guest, invitee or non-resident active chapter member who is found to possess, use, sell, and/or distribute any narcotic, drug, non-prescribed medicine, chemical compound, or other controlled substance or paraphernalia in the Chapter House or anywhere on the property will be subject to disciplinary sanctions as set forth by the Chapter Judicial Board and supervised by the Chapter Advisory Board in keeping Sigma Chi Headquarters posted policy and procedures for such alleged action. This will be administered in compliance with the established conduct code and procedures set forth with the Chapter Judicial Board and in accordance with Sigma Chi International Fraternity and Missouri State University guidelines. Sigma Chi residents, active members, invitees, and guests will be held responsible for their own behavior.

## SMOKE-FREE/TOBACCO-FREE LIVING


The use of all tobacco products (both smoking and non-smoking) is expressly forbidden inside and immediately surrounding outer porch residence structure, including all indoor common areas and individual apartment units. Designated smoking and tobacco use areas away from the residence structure will be identified to serve as the only area set aside for such use. The purpose of this policy is to promote wellness, ensure a healthy environment, and provide guidelines for tobacco use on Sigma Chi Chapter House grounds. This Policy applies to all tobacco products. Definition: For purposes of this policy, the phrase "smoking and the use of tobacco products" is defined as the smoking of tobacco via cigarettes, cigars, or pipes, or the use of devices or products that may be used to smoke or mimic smoking (including bongos, hookahs, vaporizers, e-cigarettes, etc.). Policy: Smoking and the use of tobacco products by residents, chapter members, guests, and visitors is prohibited within the residence facility as well as the immediate surrounding area. Smoking and the use of tobacco products is always prohibited in all interior spaces of the Chapter House. Smoking and the use of tobacco products will be allowed only at designated outdoor locations set aside on the grounds and away from the Chapter House structure.

## ALCOHOL-FREE/SUBSTANCE-FREE HOUSING

Our House Corporation and our Active Chapter officers have signed a Commitment Statement as requested by Sigma Chi Fraternity Risk Management Foundation (RMF) confirming that our Chapter House will be operated as an alcohol free or 'dry house'. This is an important factor in our ability to provide affordable liability insurance coverage for the Active Chapter and alumni volunteers. The Sigma Chi safety and risk management analysis shows that the absence of alcohol considerably reduces the likelihood and severity of potential injury or loss. This Commitment Statement affirms that the chapter facility will be completely dry. No events with alcohol will take place and individuals, including residents, active chapter, alumni members, guests, and invitees may not possess or consume alcohol anywhere in the Chapter House or in the parking lot or anywhere on the Chapter House property. Along with a dry house, this pledge also includes any Chapter events hosted at a brother's residence, whether on or off campus. All Chapter events with alcohol must be held off-site (leased venue, bar, etc.) in conjunction with a licensed third-party vendor. Making this Chapter-wide decision ensures that the Chapter can obtain affordable liability insurance coverage.







The alumni volunteer Board of Directors of the Sigma Chi House Corporation of Springfield, Missouri (a Missouri Benevolent Corporation), directs the operation of the Chapter House in cooperation with JNM Realty Group LLC (the independent property manager), the Resident Director, the elected Consul, the House Manager, and all members of the Active Chapter.

**The Chapter House Location**

832 South Kimbrough Avenue, Springfield, Missouri 65806-3311

**Direct Administrative Matters to the House Corporation**

Sigma Chi House Corporation, House Corporation President, P.O. Box 7291, Overland Park, Kansas 66207  
missouristatesigmachi@gmail.com • (913) 638-8948

**Independent Property Manager**

JNM Realty Group LLC, 110 Dempsey Drive, Suite K, Rogersville, Missouri 65742  
aloveland@jnmrealtygroup.com • (417) 823-3950

**Chapter House Resident Director**

Todd Scroggins • (417) 438-0219

**Chapter Advisory Board**

Drew Hocker, Chapter Advisor • Adam Dunavant, Dustin Duckworth, Alec Barber, Dustin Keyhill

EDITION 1 - OCTOBER 2023